

# Orient 2

ONT-800-DBL-S-3/ONT-800-DBL-B-3  
ONT-920-DBL-S-3/ONT-920-DBL-B-3  
ONT-1000-DBL-S-3/ONT-1000-DBL-B-3

The Orient is a simplistic and elegantly designed banner stand that has the capability to be double sided. Dual retractor mechanisms allow you to present two graphics back to back. It is finished in anodized silver or black with heavy duty molded endplates. Padded carry bag is included.




We are continually improving and modifying our product range and reserve the right to vary the specifications without prior notice. All dimensions and weights quoted are approximate and we accept no responsibility for variance. E&OE. See Graphic Templates for graphic bleed specifications.

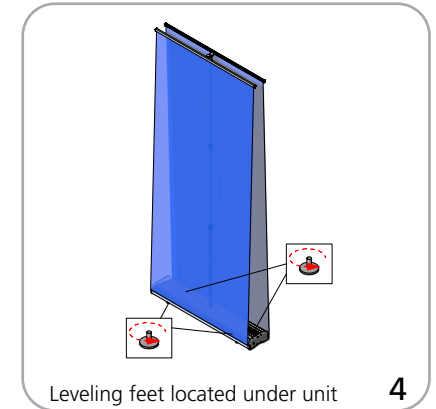
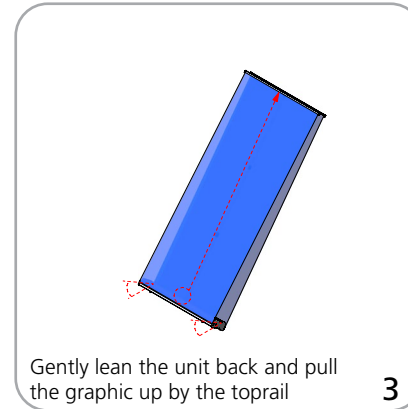
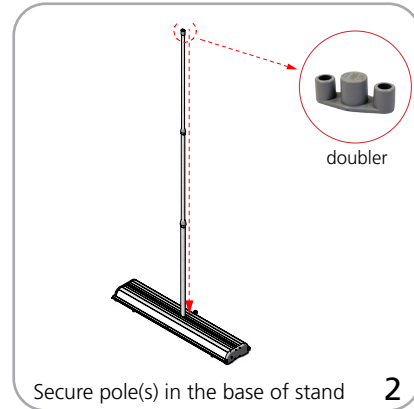
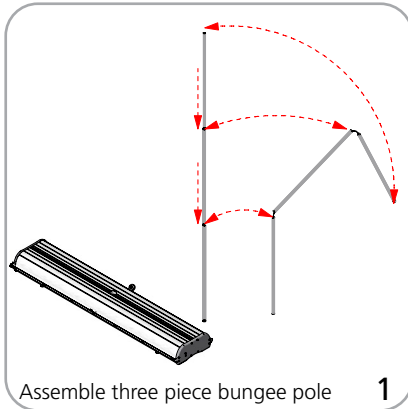
## features and benefits:

- Variable width
- Molded endplates
- Double sided
- Supplied with a padded carry bag with strap
- Available in anodized black or silver
- Three piece bungee cord pole
- Lifetime warranty

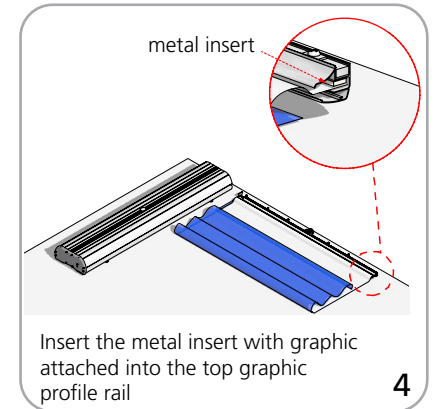
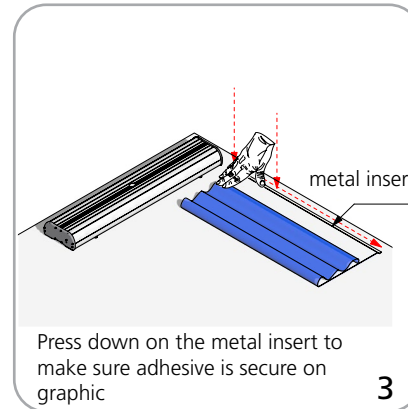
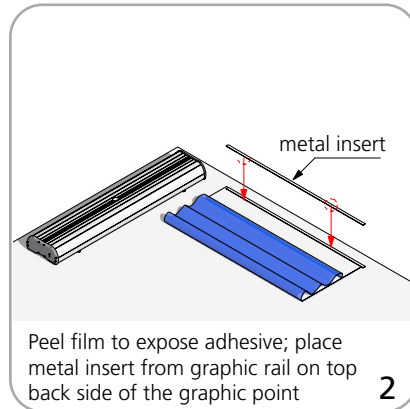
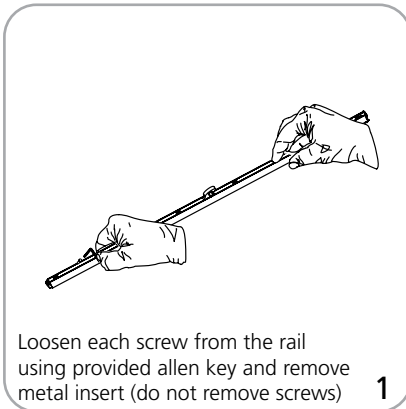
## dimensions:

Hardware	Graphic
Assembled unit: (approximate sizes) Orient 800: 85.04"(h) x 32.68"(w) x 7.28"(d) 2160mm(h) x 830mm(w) x 185mm(d)  Orient 920: 85.04"(h) x 37.49"(w) x 7.28"(d) 2160mm(h) x 950mm(w) x 185mm(d)  Orient 1000: 85.04"(h) x 40.55"(w) x 7.28"(d) 2160mm(h) x 1030mm(w) x 185mm(d)  Base dimensions: Orient 800: 3.15"(h) x 32.68"(w) x 7.28"(d) 80mm(h) x 830mm(w) x 185mm(d)  Orient 920: 3.15"(h) x 37.49"(w) x 7.28"(d) 80mm(h) x 950mm(w) x 185mm(d)  Orient 1000: 3.15"(h) x 40.55"(w) x 7.28"(d) 80mm(h) x 1030mm(w) x 185mm(d)	Visible dimensions: Orient 800: 83.25"(h) x 31.5"(w) 2114.55mm(h) x 800.4mm(w)  Orient 920: 83.25"(h) x 35.5"(w) 2114.55mm(h) x 901.7mm(w)  Orient 1000: 83.25"(h) x 39.25"(w) 2114.55mm(h) x 996.95mm(w)  Grippa top rail attachment recommended for semi-permanent or long term use. Adhesive top rail attachment recommended for short term use.  <b>WARNING:</b> Always attach graphic to base and top rail before removing the locking pin. After fitting, the graphic should be left for 24 hours before use to ensure the adhesive bonds sufficiently. Opening the base will invalidate the product warranty.
Shipping	
Shipping dimensions - ships in one box Orient 800: 5"(h) x 37"(w) x 10"(d) 127mm(h) x 940mm(w) x 254mm(d)  Orient 920: 6"(h) x 39"(w) x 12"(d) 152.4mm(h) x 991mm(w) x 305mm(d)  Orient 1000: 6"(h) x 42"(w) x 12"(d) 152.4mm(h) x 1067mm(w) x 305mm(d)  Approximate shipping weight: Orient 800: 13 lbs without graphic  Orient 920: 15 lbs without graphic  Orient 1000: 16 lbs without graphic	
additional information:	
Graphic materials: 14oz anti-curl vinyl, 8oz. oxford, 11 mil melinex  Lumina 2 banner lighting option available	
	

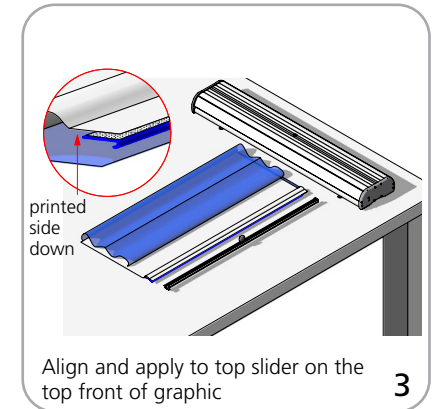
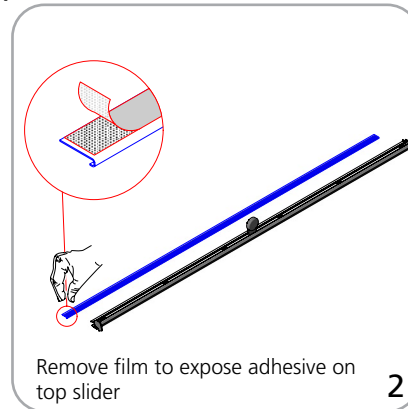
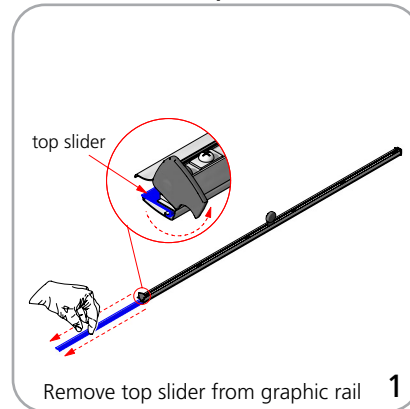
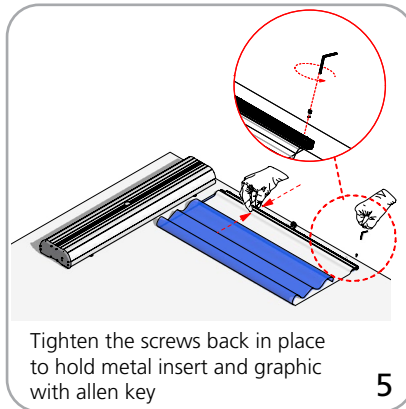
## Set-up



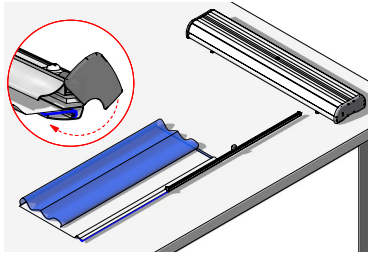
## Graphic to top rail attachment (metal insert)



## Quick slide top rail attachment (plastic insert)

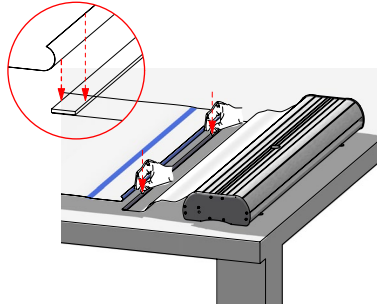


## Graphic to base attachment



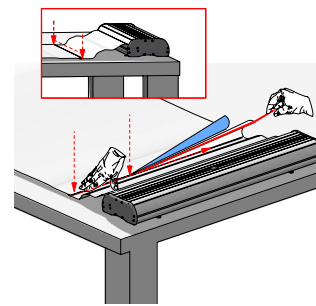
Insert graphic onto graphic rail

4



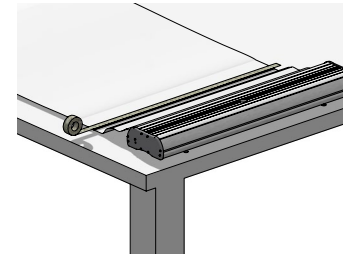
Line the bottom of the back of graphic print with adhesive tape on white leader strip

1



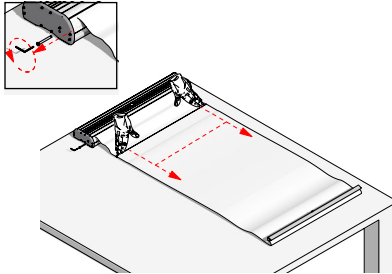
Once aligned pull adhesive tape slowly while applying pressure to graphic to adhere tape

2



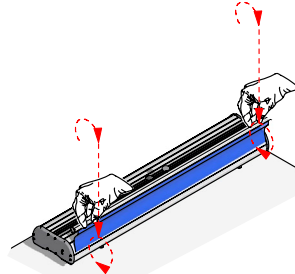
Place in additional masking tape to the back of the graphic for extra protection

3



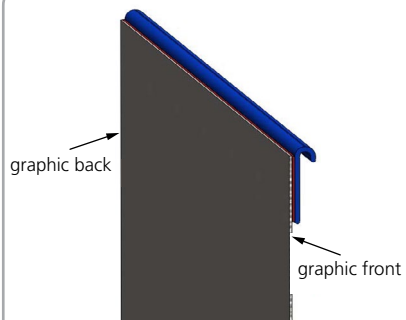
Remove pin while holding onto the graphic so the graphic does not retract back in quickly

4



Slowly retract the graphic back into the base

5



graphic back

graphic front

top rail slider

## Check out these related products:

---



Orient



Imagine



Advance



Barracuda



Lumina 2



Excalibur