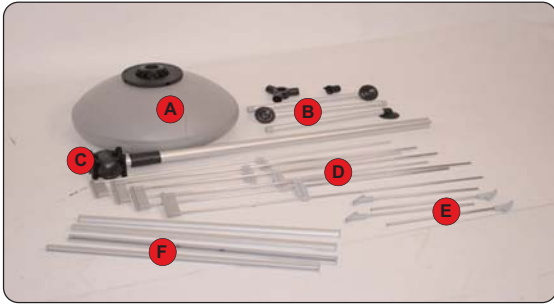


Assembly Instructions



Kit includes: 1 x Base clamp & fittings (A), 3 x Aluminum legs w / feet and fittings (B), 1 x Pole/Hub assembly (C), 4 x Graphic arms (D), 4 x Lower Arms (E) and 4 x Graphic rails (F)



1 Turn the base upside down. Position the leg fitting so the barrels match the leg recesses.



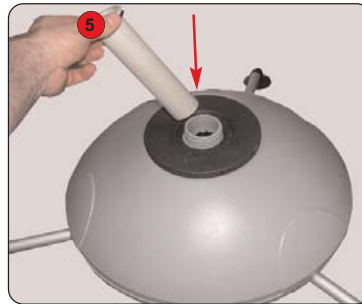
2 Lock the leg fitting in place with the molded thumb screw.



3 Screw all three leg assemblies into leg fitting making sure to position the feet to facing up.



4 Turn the base over. This is the assembled base.



5 Unscrew mounting cap and remove pole pocket. Fill base with water.



6 Reinstall pole pocket and lock into place with mounting caps. Insert pole into pole bucket and rotated knob clockwise until tight.

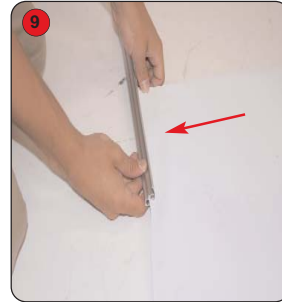


7 Unscrew hub knob and rotate hub(s). Slide the graphic arms into hub(s). (x 4) Adjust hub to desired position and tighten knob.

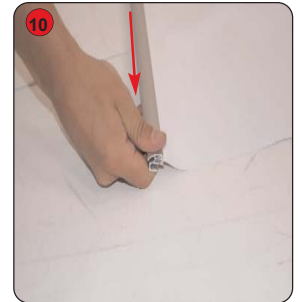


8 Open graphic rail. (x 4)

Note: Graphic rail end cap removed to show snap style grip rail.



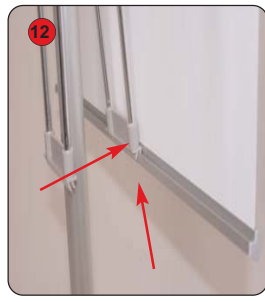
9 Side graphic face up into graphic rail. (x4)



10 Once the graphic is evenly positioned, close the rail by pressing the two sides together. (x4)



11 Mount the top graphic rail to the top of the graphic arm(s).



12 Mount bottom graphic rail by pushing bottom graphic arm out and away from the pole. Attach graphic rail to the graphic arm using the same method as top graphic rail



13 If using lower arms. Mount both arms into collar. Attach the graphic rail using same method as in step 11. Adjust pole height as needed.



14 Adjust pole height by pushing down on button and moving the pole up or down. Release pole button move pole up or down until button locks pole into place.